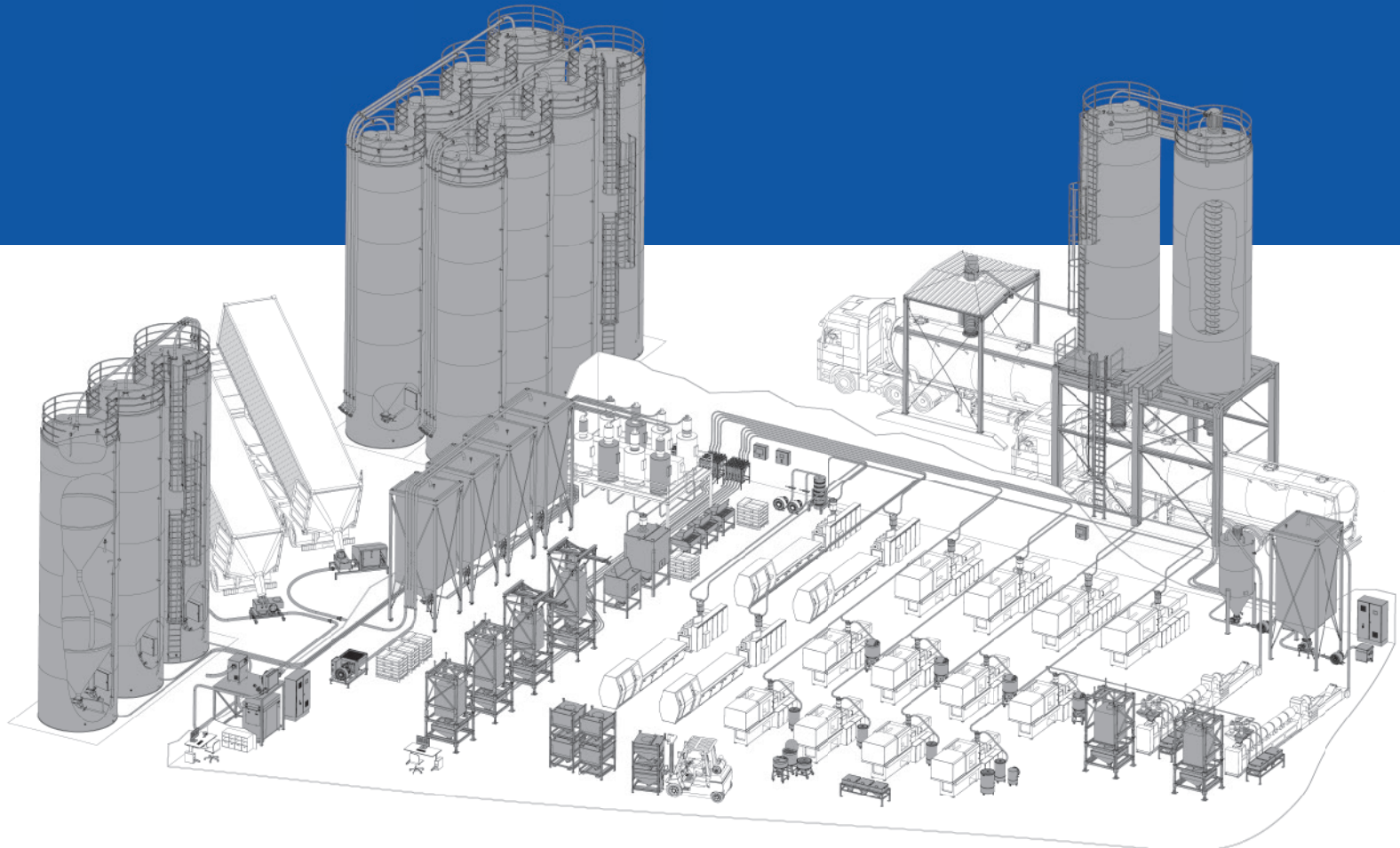
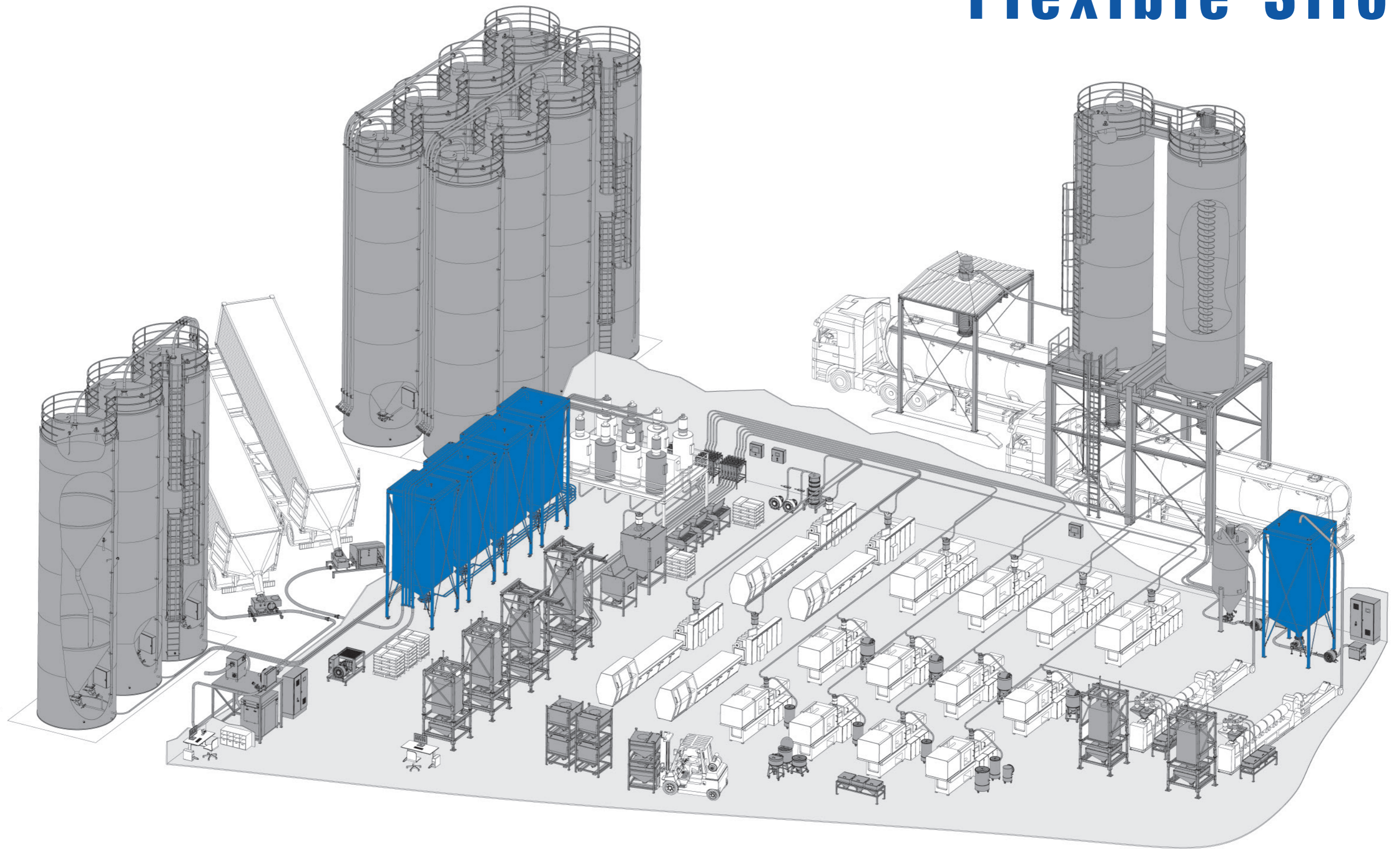


flexible silo

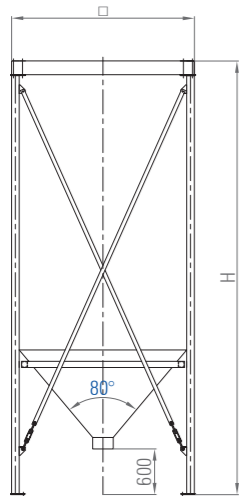
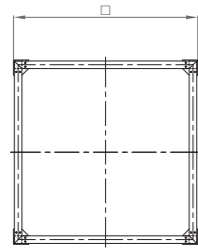


Flexible Silo



flexible indoor silo SFLEX

- for installation on a flat floor in the hall
- delivered in single parts with anchor bolts
- steel construction RAL9005 (jet black)
- other RAL colours on request
- breathable and highly tear-resistant polyester fabric
- maximum bulk density: 6.5 kN/m³ / 0.65 to/m³



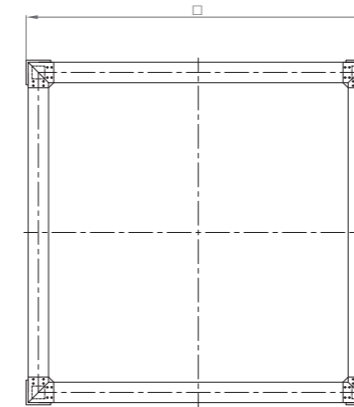
□ = 1500 x 1500	m ³	H
SFLEX.15.15.29.030.80.06.1	3.0	2900
SFLEX.15.15.34.039.80.06.1	3.9	3400
SFLEX.15.15.39.048.80.06.1	4.8	3900
SFLEX.15.15.44.057.80.06.1	5.7	4400
SFLEX.15.15.49.066.80.06.1	6.6	4900

□ = 2000 x 2000	m ³	H
SFLEX.20.20.29.051.80.06.1	5.1	2900
SFLEX.20.20.34.068.80.06.1	6.8	3400
SFLEX.20.20.39.085.80.06.1	8.5	3900
SFLEX.20.20.44.102.80.06.1	10.2	4400
SFLEX.20.20.49.119.80.06.1	11.9	4900
SFLEX.20.20.54.136.80.06.1	13.6	5400
SFLEX.20.20.59.153.80.06.1	15.3	5900

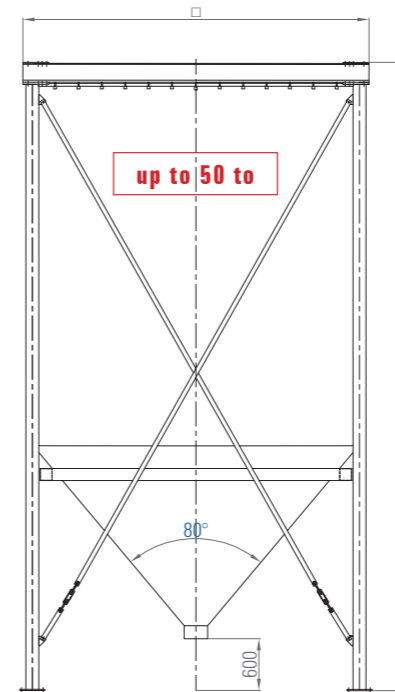
□ = 2500 x 2500	m ³	H
SFLEX.25.25.29.071.80.06.1	7.1	2900
SFLEX.25.25.34.097.80.06.1	9.7	3400
SFLEX.25.25.39.124.80.06.1	12.4	3900
SFLEX.25.25.44.150.80.06.1	15.0	4400
SFLEX.25.25.49.177.80.06.1	17.7	4900
SFLEX.25.25.54.203.80.06.1	20.3	5400
SFLEX.25.25.59.230.80.06.1	23.0	5900
SFLEX.25.25.64.256.80.06.1	25.6	6400

□ = 3000 x 3000	m ³	H
SFLEX.30.30.44.185.80.06.1	18.5	4400
SFLEX.30.30.49.240.80.06.1	24.0	4900
SFLEX.30.30.54.279.80.06.1	27.9	5400
SFLEX.30.30.59.318.80.06.1	31.8	5900

flexible indoor silo SFLEX

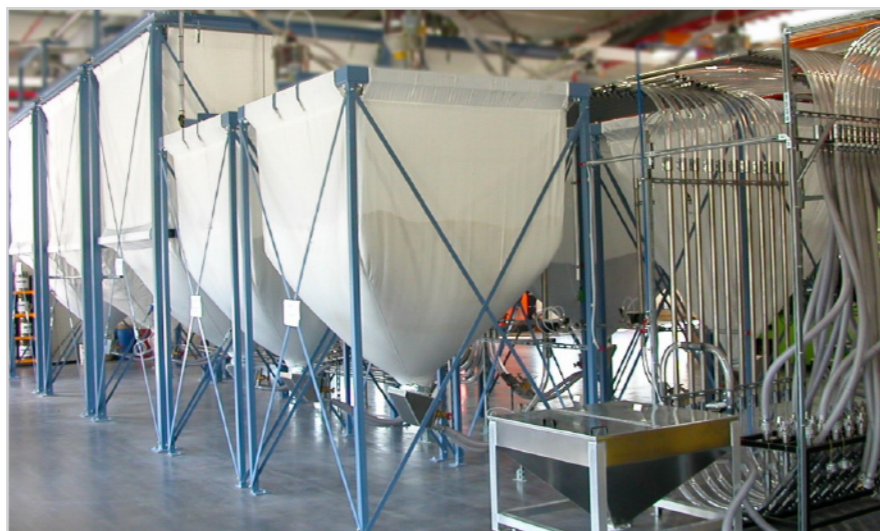


□ = 3500 x 3500	m ³	H
SFLEX.35.35.49.290.80.06.1	29.0	4900
SFLEX.35.35.54.344.80.06.1	34.4	5400
SFLEX.35.35.59.397.80.06.1	39.7	5900
SFLEX.35.35.64.450.80.06.1	45.0	6400
SFLEX.35.35.69.503.80.06.1	50.3	6900
SFLEX.35.35.74.557.80.06.1	55.7	7400



□ = 4000 x 4000	m ³	H
SFLEX.40.40.54.423.80.06.1	42.3	5400
SFLEX.40.40.59.492.80.06.1	49.2	5900
SFLEX.40.40.64.562.80.06.1	56.2	6400
SFLEX.40.40.69.632.80.06.1	63.2	6900
SFLEX.40.40.74.702.80.06.1	70.2	7400
SFLEX.40.40.79.772.80.06.1	77.2	7900

□ = 4500 x 4500	m ³	H
SFLEX.45.45.54.505.80.06.1	50.5	5400
SFLEX.45.45.59.590.80.06.1	59.0	5900
SFLEX.45.45.64.680.80.06.1	68.0	6400
SFLEX.45.45.69.768.80.06.1	76.8	6900

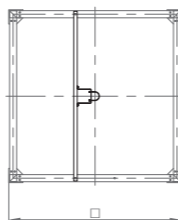


silos filling

adaption for filling bend

- centrally on the silo roof
- incl. bracket for MAX level indicator

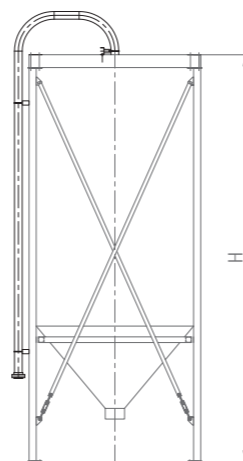
SFLEX.Z.01.FLRB.15.15	1500 x 1500
SFLEX.Z.01.FLRB.20.20	2000 x 2000
SFLEX.Z.01.FLRB.25.25	2500 x 2500
SFLEX.Z.01.FLRB.30.30	3000 x 3000
SFLEX.Z.01.FLRB.35.35	3500 x 3500
SFLEX.Z.01.FLRB.40.40	4000 x 4000
SFLEX.Z.01.FLRB.45.45	4500 x 4500



filling pipe ND100

- filling bend made of stainless steel
- with clamps to connect at the steel construction
- truck coupling Storz A

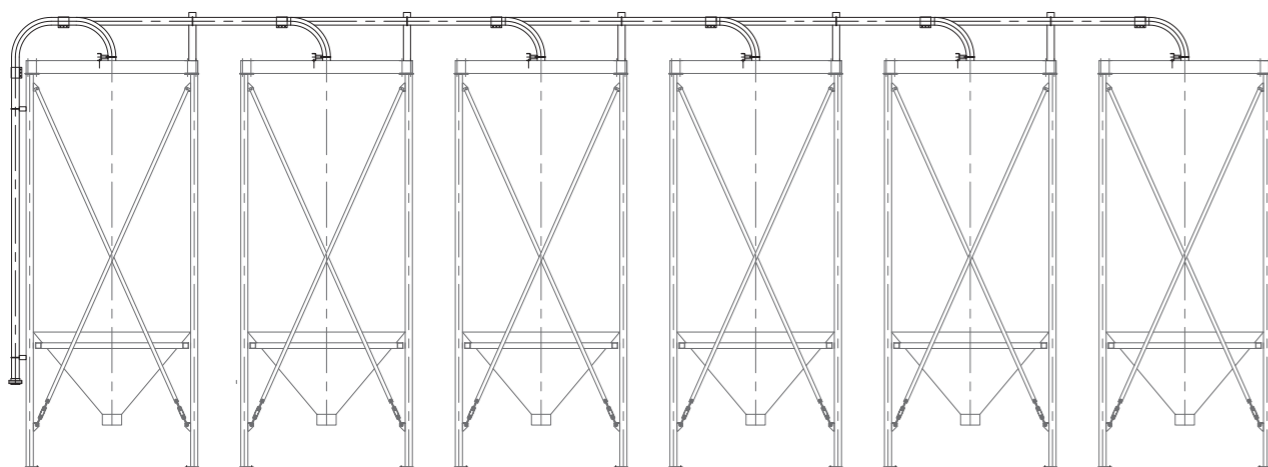
	material	H
SFLEX.Z.02.FL.100.5000.AL	aluminium	5000
SFLEX.Z.02.FL.100.5000.CR	stainless steel	5000
SFLEX.Z.02.FL.100.7500.AL	aluminium	7500
SFLEX.Z.02.FL.100.7500.CR	stainless steel	7500



central filling point ND100

- additional price on price of the filling pipes at each silo
- supports for fastening the filling pipes on the silo roof and vertical at the first silo
- the filling pipes are ending appr. 1.2 m above the ground directly at the first silo
- bends made of stainless steel; pipes made of aluminium or stainless steel

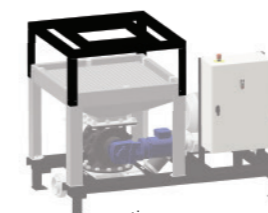
	material	number of silos
SFLEX.Z.02.FLZ.02.AL	aluminium	2
SFLEX.Z.02.FLZ.02.CR	stainless steel	2
SFLEX.Z.02.FLZ.03.AL	aluminium	3
SFLEX.Z.02.FLZ.03.CR	stainless steel	3
SFLEX.Z.02.FLZ.04.AL	aluminium	4
SFLEX.Z.02.FLZ.04.CR	stainless steel	4
SFLEX.Z.02.FLZ.05.AL	aluminium	5
SFLEX.Z.02.FLZ.05.CR	stainless steel	5
SFLEX.Z.02.FLZ.06.AL	aluminium	6
SFLEX.Z.02.FLZ.06.CR	stainless steel	6
SFLEX.Z.02.FLZ.07.AL	aluminium	7
SFLEX.Z.02.FLZ.07.CR	stainless steel	7
SFLEX.Z.02.FLZ.08.AL	aluminium	8
SFLEX.Z.02.FLZ.08.CR	stainless steel	8



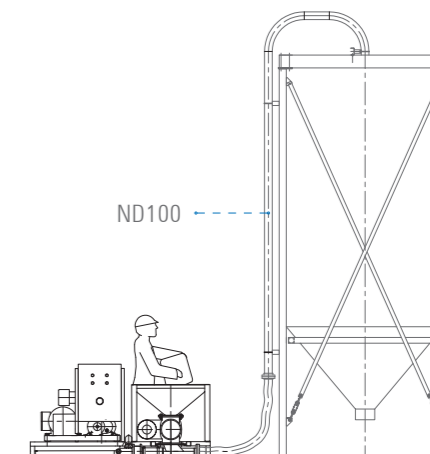
filling

mobile positive conveying unit

The positive conveying unit is used for the manual emptying of plastic pellets from 25kg bags and to fill silos. The components are all accommodated on a steel frame which can be transported by forklift truck.



option:
with stacking frame for big bag

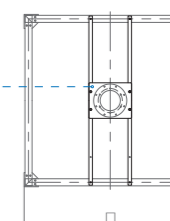


	output (0,6 t/m ³)	conveying distance	number of bends
DFST.SK.100.110	≈ 5 - 6 t/h	400 V, 50 Hz, 32 A	25 m, thereof 15 m vertical
DFST.SK.100.185	≈ 5 - 6 t/h	400 V, 50 Hz, 63 A	50 m, thereof 20 m vertical

adaption for hopper loader

- centrally on the silo roof
- incl. bracket for MAX level indicator

SFLEX.Z.01.SFG.15.15	1500 x 1500
SFLEX.Z.01.SFG.20.20	2000 x 2000
SFLEX.Z.01.SFG.25.25	2500 x 2500
SFLEX.Z.01.SFG.30.30	3000 x 3000
SFLEX.Z.01.SFG.35.35	3500 x 3500
SFLEX.Z.01.SFG.40.40	4000 x 4000
SFLEX.Z.01.SFG.45.45	4500 x 4500

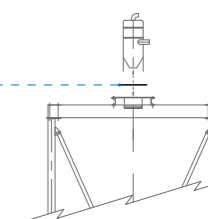


adapter plate for vacuum conveyor

- stainless steel

	connection dimensions*
CE.Z.ADAPT.SFG.DIG.280.CR	Di 250; BCD 280; 6 x M6
CE.Z.ADAPT.SFG.FER.225.CR	Di 202; BCD 225; 8 x M6
CE.Z.ADAPT.SFG.FER.330.CR	Di 311.5; BCD 330; 8 x M6
CE.Z.ADAPT.SFG.KOC.268.CR	Di 226; 190 x 190; 4 x M8
CE.Z.ADAPT.SFG.MOT.195.CR	Di 175; BCD 195; 8 x M6
CE.Z.ADAPT.SFG.MOT.225.CR	Di 200; BCD 225; 8 x M6
CE.Z.ADAPT.SFG.MOT.260.CR	Di 240; BCD 260; 8 x M6
CE.Z.ADAPT.SFG.MOT.325.CR	Di 300; BCD 325; 8 x M6
CE.Z.ADAPT.SFG.NEW.265.CR	Di 240; BCD 265; 8 x M8
CE.Z.ADAPT.SFG.PIO.280.CR	Di 240; BCD 280; 4 x M8
CE.Z.ADAPT.SFG.PRO.245.CR	Di 208; BCD 245; 4 x M8
CE.Z.ADAPT.SFG.TSC.335.CR	Di 305; BCD 335; 4 x M6
CE.Z.ADAPT.SFG.WIT.354.CR	Di 300; BCD 354; 6 x M6

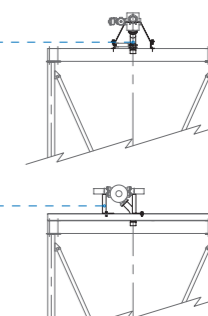
*other connection dimensions according to specifications



adaption for filling diverter NEW

- centrally on the silo roof
- incl. bracket for MAX level indicator

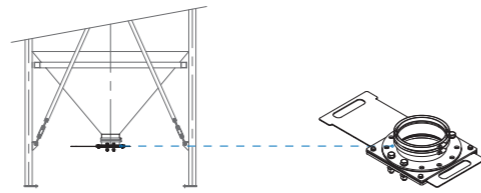
	Ø filling diverter
SFLEX.Z.01.W.080.25.25.9005	2500 x 2500
SFLEX.Z.01.W.080.30.30.9005	3000 x 3000
SFLEX.Z.01.W.080.35.35.9005	3500 x 3500
SFLEX.Z.01.W.080.40.40.9005	4000 x 4000
SFLEX.Z.01.W.080.45.45.9005	4500 x 4500
SFLEX.Z.01.W.100.25.25.9005	2500 x 2500
SFLEX.Z.01.W.100.30.30.9005	3000 x 3000
SFLEX.Z.01.W.100.35.35.9005	3500 x 3500
SFLEX.Z.01.W.100.40.40.9005	4000 x 4000
SFLEX.Z.01.W.100.45.45.9005	4500 x 4500



emptying discharging

emergency slide valve (ND250)

- connection size: ND250 (drilling acc. to PN 10)
- body made of aluminium
- slide plate made of stainless steel



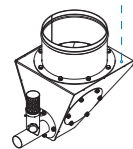
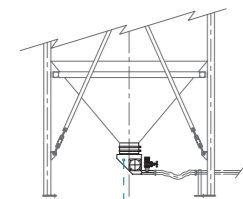
suction box (ASK.SL)

made of stainless steel

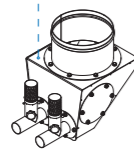
- connection diameter: 250 mm
- 1, 2, 4, 6 or 16 adapter openings
- sleeve 1 1/2" for MIN level indicator closed with plug
- inspection and cleaning opening on both sides
- suction pipe made of stainless steel with suction strainer and vacuum air adjustment (Ø38 - 76.1)

options:

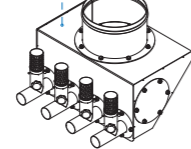
- cover suction hole
- filter for suction point
- sample taking
- suction coupling for silo truck Storz-A



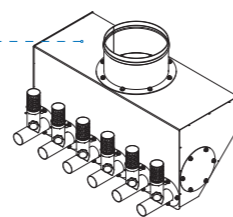
1



2



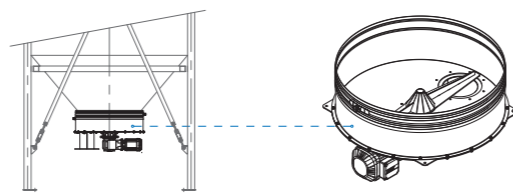
4



6

stirring device

- body and agitating arm made of stainless steel
- motor power 3.0 kW
- outlet diameter optionally ND200 / ND250



ladder and gangway

siloladder (with cage)

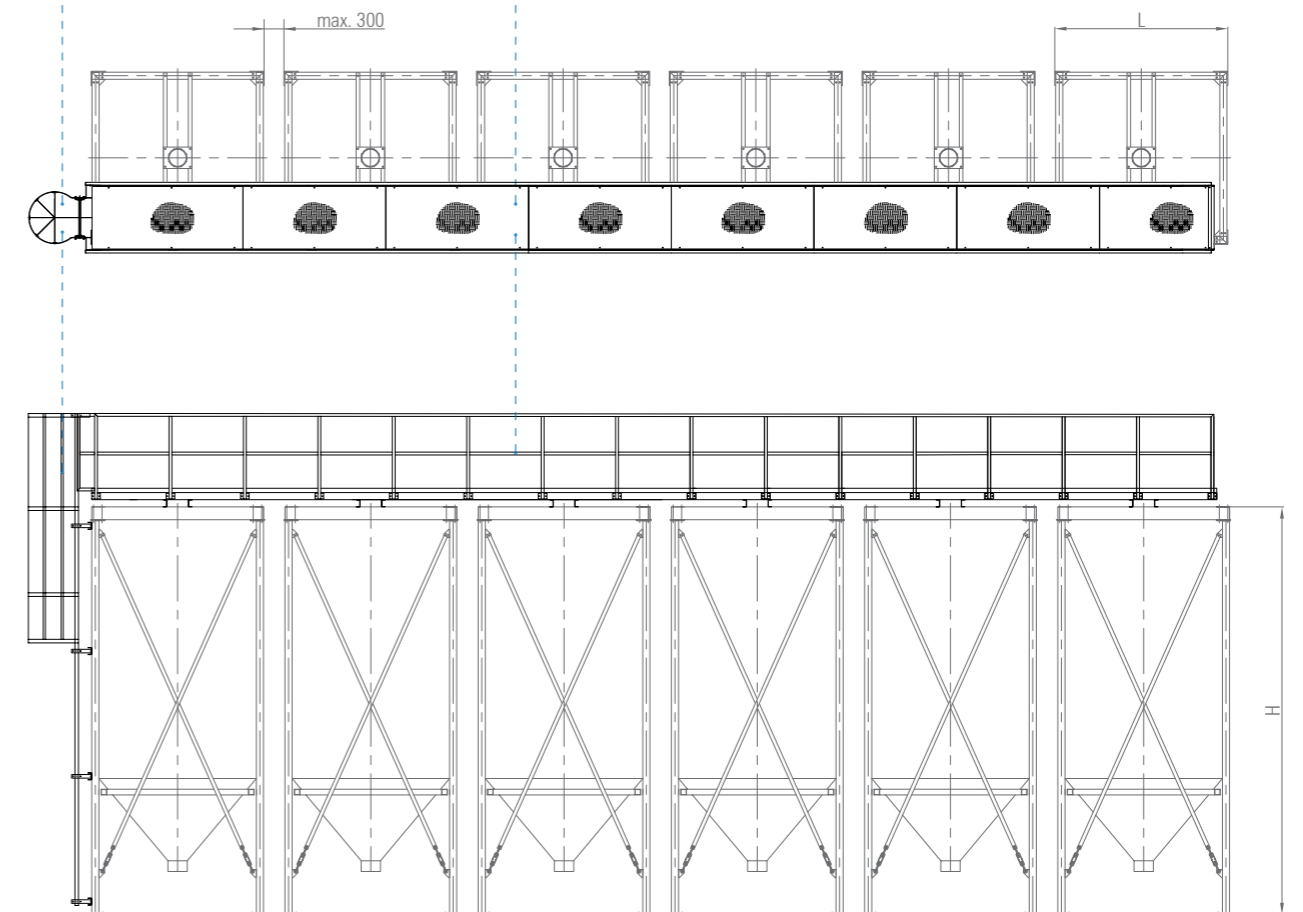
- incl. safety door at the top exit

gangway (with railing)

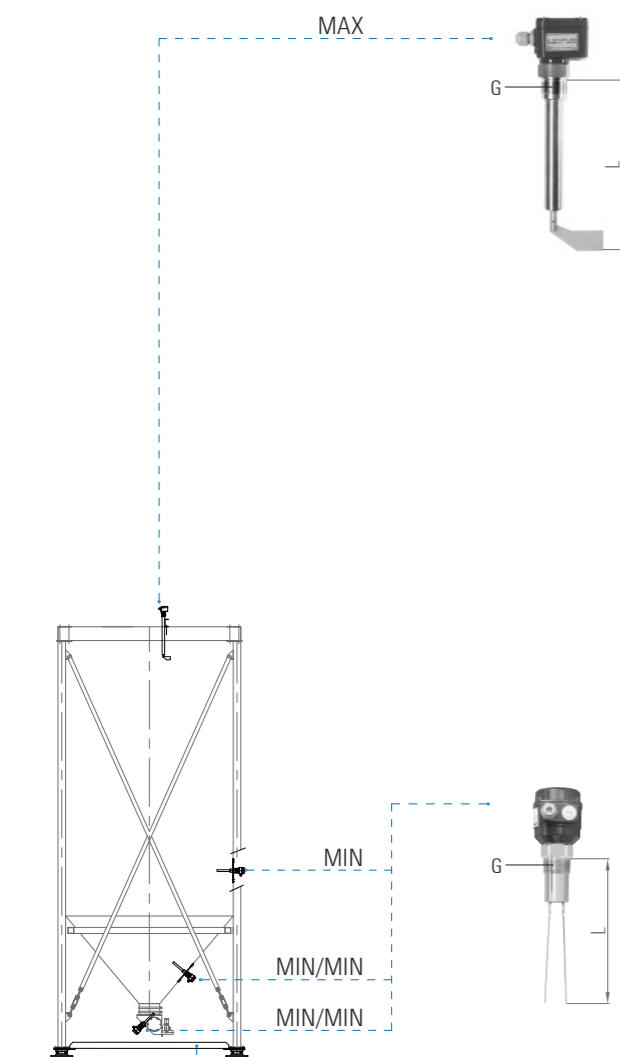
- made of aluminium / steel
- breadth approx. 900 mm
- price validity for 1 silo

	H max.
SFLEX.Z.05.LEITER.05000	5000
SFLEX.Z.05.LEITER.06500	6500
SFLEX.Z.05.LEITER.08000	8000

	L
SFLEX.Z.05.STEG.20.20	2000
SFLEX.Z.05.STEG.25.25	2500
SFLEX.Z.05.STEG.30.30	3000
SFLEX.Z.05.STEG.35.35	3500
SFLEX.Z.05.STEG.40.40	4000
SFLEX.Z.05.STEG.45.45	4500



level measuring



rotary paddle limit switch

- MAX level indicator
- installation on the silo roof
- potential-free signal output

	⚡	L	G	ATEX
FÜ.MAX.3002.0500.01	24 V (DC) + 230 V (50 Hz)	500	1 1/2"	no
FÜ.MAX.3002.0500.03	24 V (DC) + 230 V (50 Hz)	500	1 1/2"	yes

adaption (limit switch) 1 1/2"

- sleeve on the side of the silo for MIN level indicator

	G
SFLEX.Z.03.GM15	1 1/2"

vibration limit switch

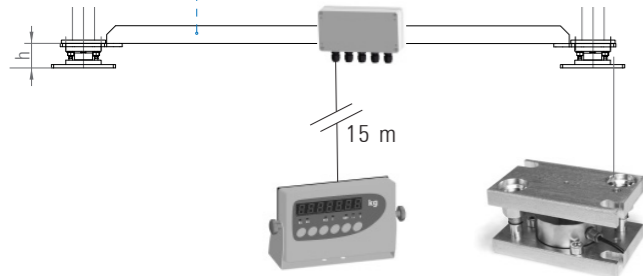
- MIN or MIN/MIN level indicator
- installation at the silo shell, silo cone or in the suction box
- potential-free signal output

	⚡	L	G	ATEX
FÜ.MIN.4020.0170.01	24 V (DC) + 230 V (50 Hz)	170	1 1/2"	no
FÜ.MIN.4020.0170.03	24 V (DC) + 230 V (50 Hz)	170	1 1/2"	yes

weighing system

- with integrated lift-off protection and bumper stop
- with necessary cross-beams between the silo feet
- 4 weighing modules with load cells and terminal box
- weighing terminal with 4 digital inputs and outputs, analog output 4-20 mA, as an interface to a higher-level control, as well as output RS232 for printer or remote display

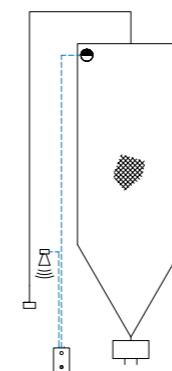
	h	□	nominal load (to)
FÜ.WS.SFLEX.15.15.06	110	1500 x 1500	6.5
FÜ.WS.SFLEX.20.20.06	110	2000 x 2000	6.5
FÜ.WS.SFLEX.20.20.13	110	2000 x 2000	13.0
FÜ.WS.SFLEX.25.25.06	110	2500 x 2500	6.5
FÜ.WS.SFLEX.25.25.13	110	2500 x 2500	13.0
FÜ.WS.SFLEX.25.25.26	110	2500 x 2500	26.0
FÜ.WS.SFLEX.30.30.26	110	3000 x 3000	26.0
FÜ.WS.SFLEX.35.35.52	140	3500 x 3500	52.0
FÜ.WS.SFLEX.40.40.52	140	4000 x 4000	52.0
FÜ.WS.SFLEX.45.45.52	140	4500 x 4500	52.0



level measuring + silo control

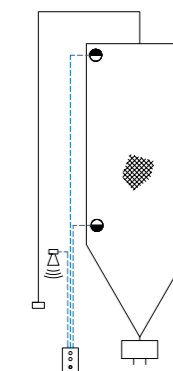
version 1.1

- MAX level indicator
- horn



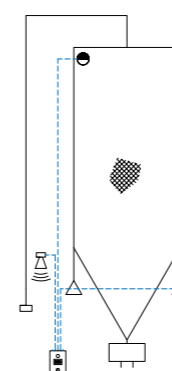
version 1.2

- MAX level indicator
- MIN level indicator
- horn



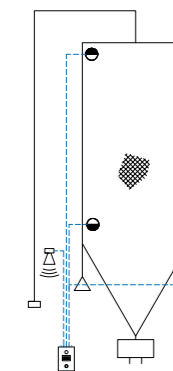
version 2.1

- MAX level indicator
- weighing system
- horn



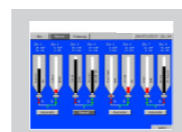
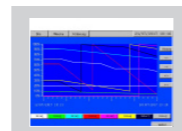
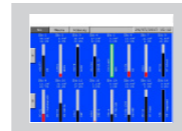
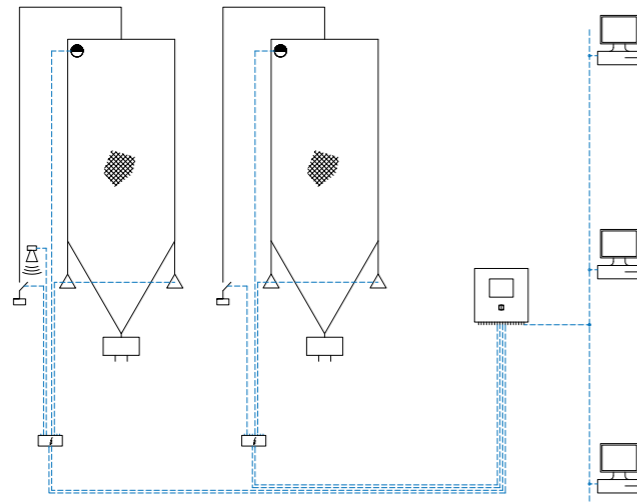
version 2.2

- MAX level indicator
- MIN level indicator
- weighing system
- horn

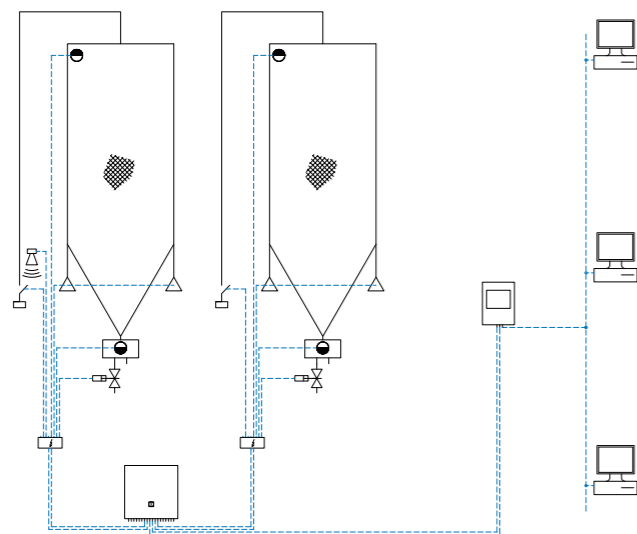


level measuring + silo control (PLC)

- version 3.1**
- MAX level indicator
 - weighing system
 - horn

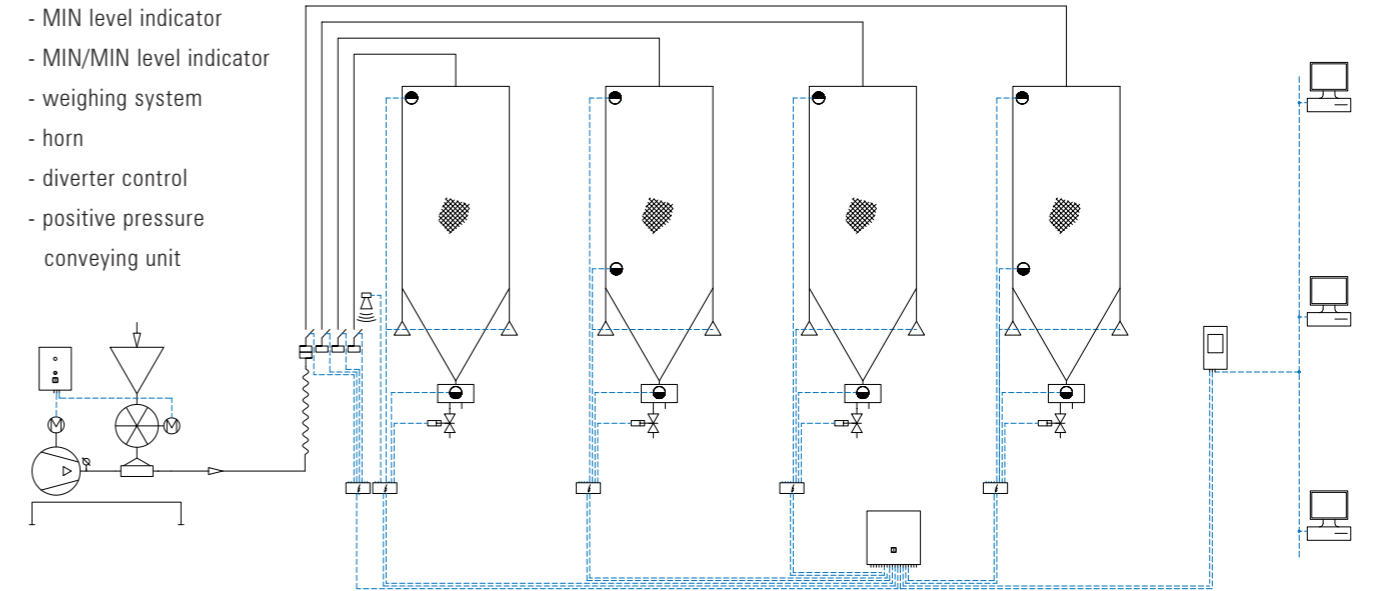


- version 3.2**
- MAX level indicator
 - MIN/MIN level indicator
 - weighing system
 - horn
 - diverter control



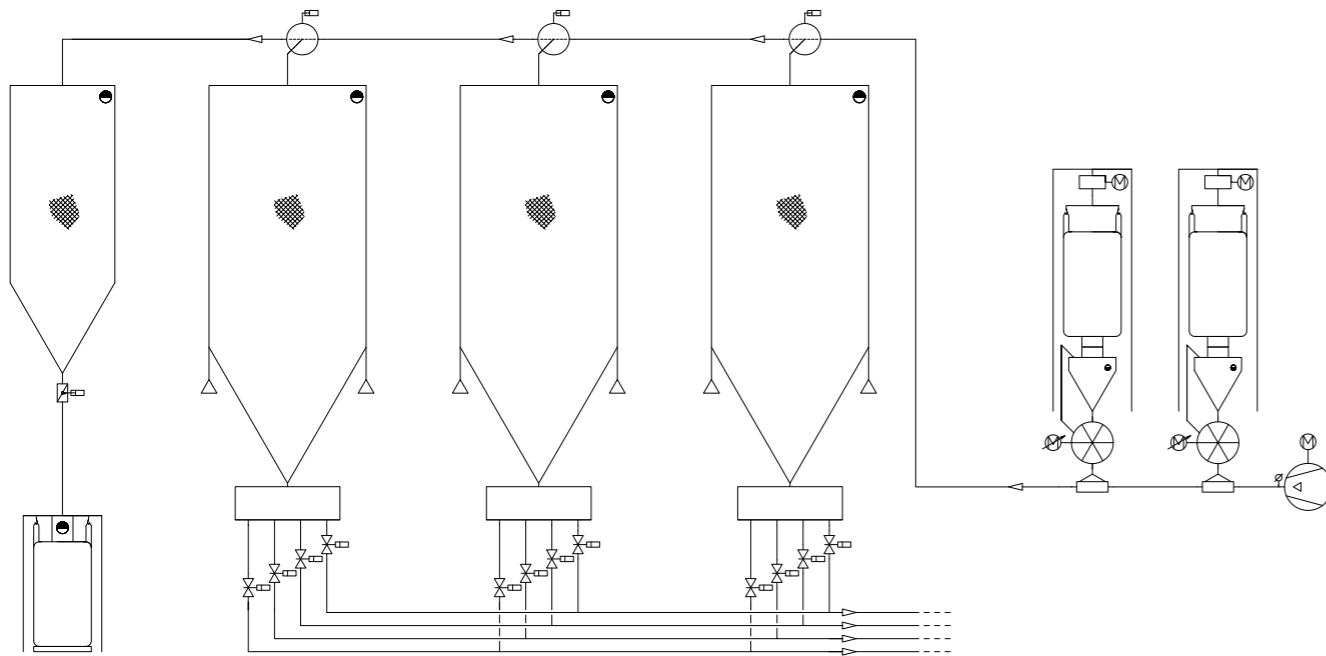
level measuring + silo control (PLC)

- version 4.1**
- MAX level indicator
 - MIN level indicator
 - MIN/MIN level indicator
 - weighing system
 - horn
 - diverter control
 - positive pressure conveying unit

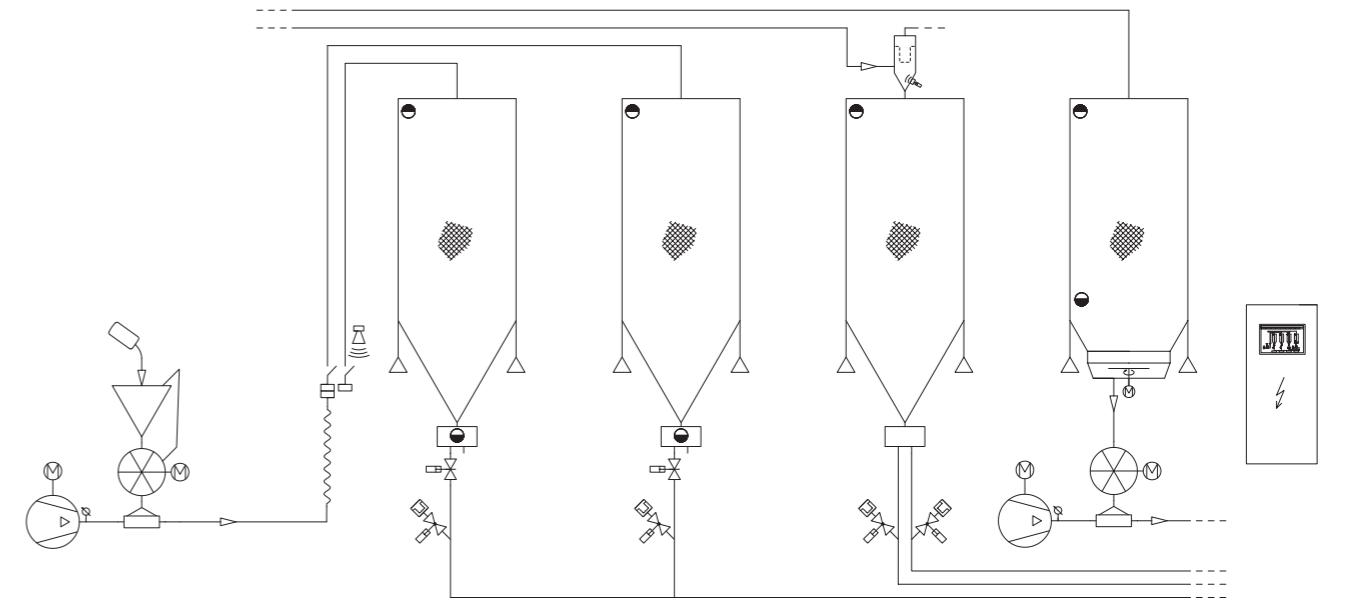
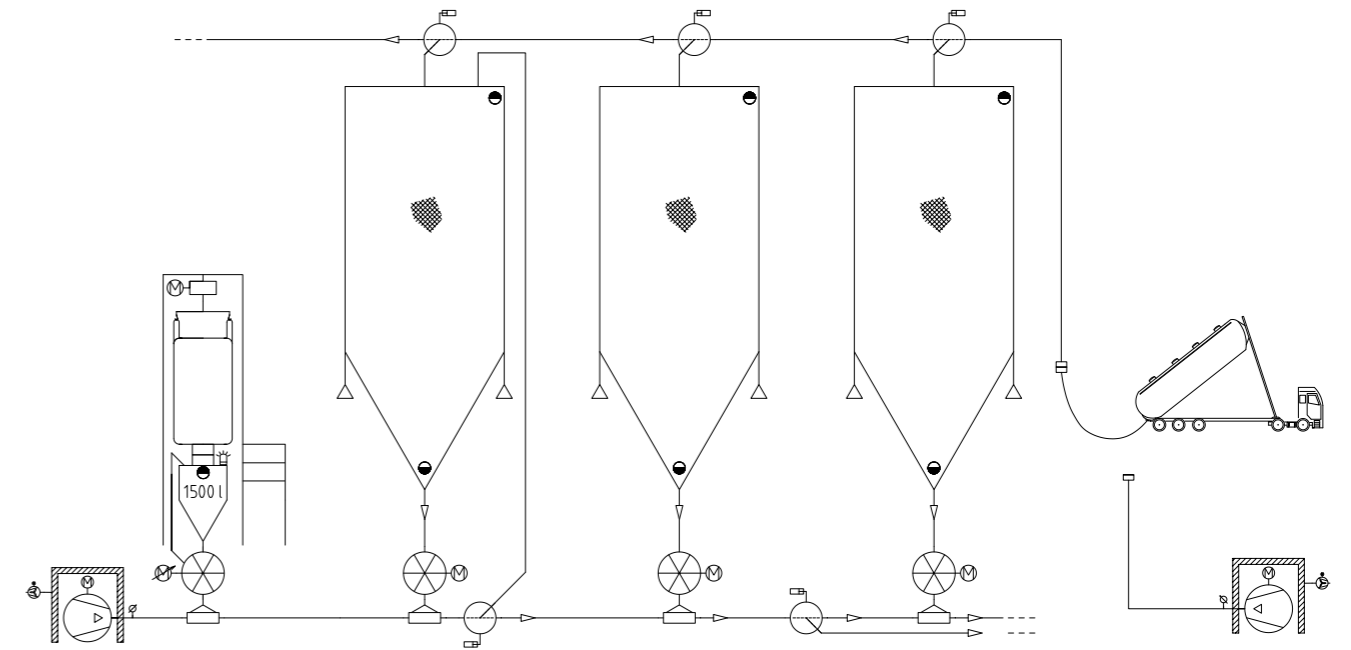


system examples

We build our silo plants with proven standard components. The size of the silos is exactly on the structural conditions. The silos are filled by positive conveying. When discharging from silo trucks or seabulk containers we offer blower stations (if requested with pressure control). We plan and manufacture individual programmable controllers and process visualisations which guarantee clear operation of the silo plant.



system examples



FIT SECM
7 Cours de Verdun
01105 Oyonnax
France

 +33 4 7477 6451

 +33 4 7473 8931

commercial@fit-oyonnax.com
www.fit-oyonnax.com