

Aquagel

Process Pump Sets

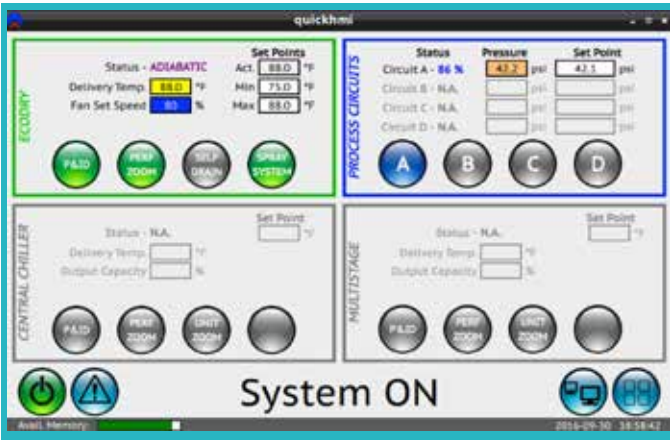
With Variable Frequency Drives

Frigel's innovative process pumping stations are available with VFDs, assuring optimum performance at the lowest possible energy consumption.



Frigel GPV process pump assemblies provide consistent working pressures under variable process demands and include:

- Engineered choice of high efficiency pump and motor assemblies to suit any requirements
- Complete factory supplied trim with non-ferrous wetted surfaces, including suction and discharge valves, discharge check valves and stainless steel suction and discharge manifolds with Victaulic connections for easy expansion
- One pre-wired inverter drive per motor with all active pumps operating at the same speed in the range of 40 – 60 Hz
- Indication of electrical consumption integral to each drive
- Control based on delivery pressure set point or ΔP set point in the case of pressurized systems
- Automatic pump cycling, including standby pumps, to equalize running times
- Manual mode operation available with each inverter
- Full control and monitoring by Frigel 3PR digital control systems

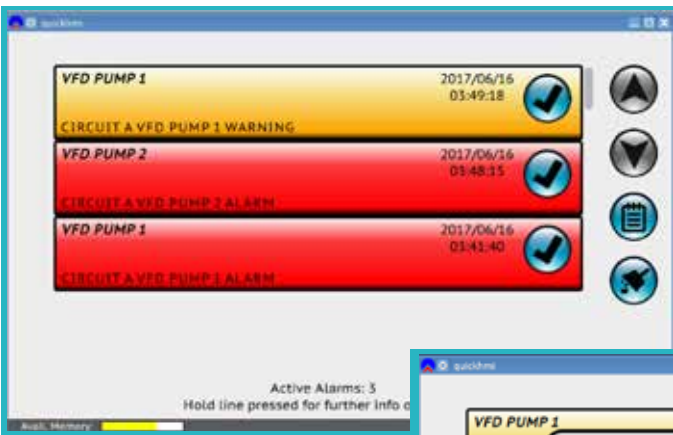
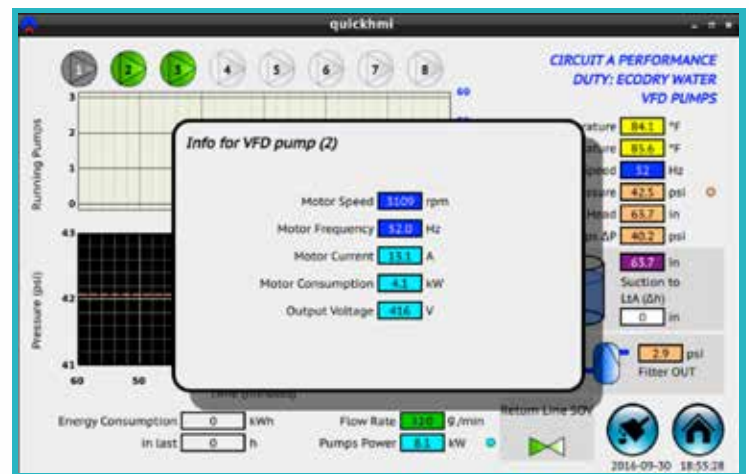


Main user screen

- Upper right quadrant provides a snapshot of up to four pumping systems
- Real time pressure versus set points are indicated
- VFD Pump station statuses are displayed in terms of % capacity
- Color coding indicates active pump stations

Touching on Circuit A of the main user screen

- All pump values are indicated, including pressures, ΔP , calculated flow rates and temperatures
- Graphical representations of pump operating pressures are included, as well as color coded statuses of individual pumps in the pumping station (in this case 2 running, 1 standby)
- Pop-up window for each pump indicates all pump variables in real time, including speed, frequency and electrical consumption



Historical alarm log screen

- All alarms are listed and dated
- Additional information for each alarm can be viewed by pressing and holding the alarm bar
- Full language alarm descriptions are supplied along with codes for reference in the drive manual

